



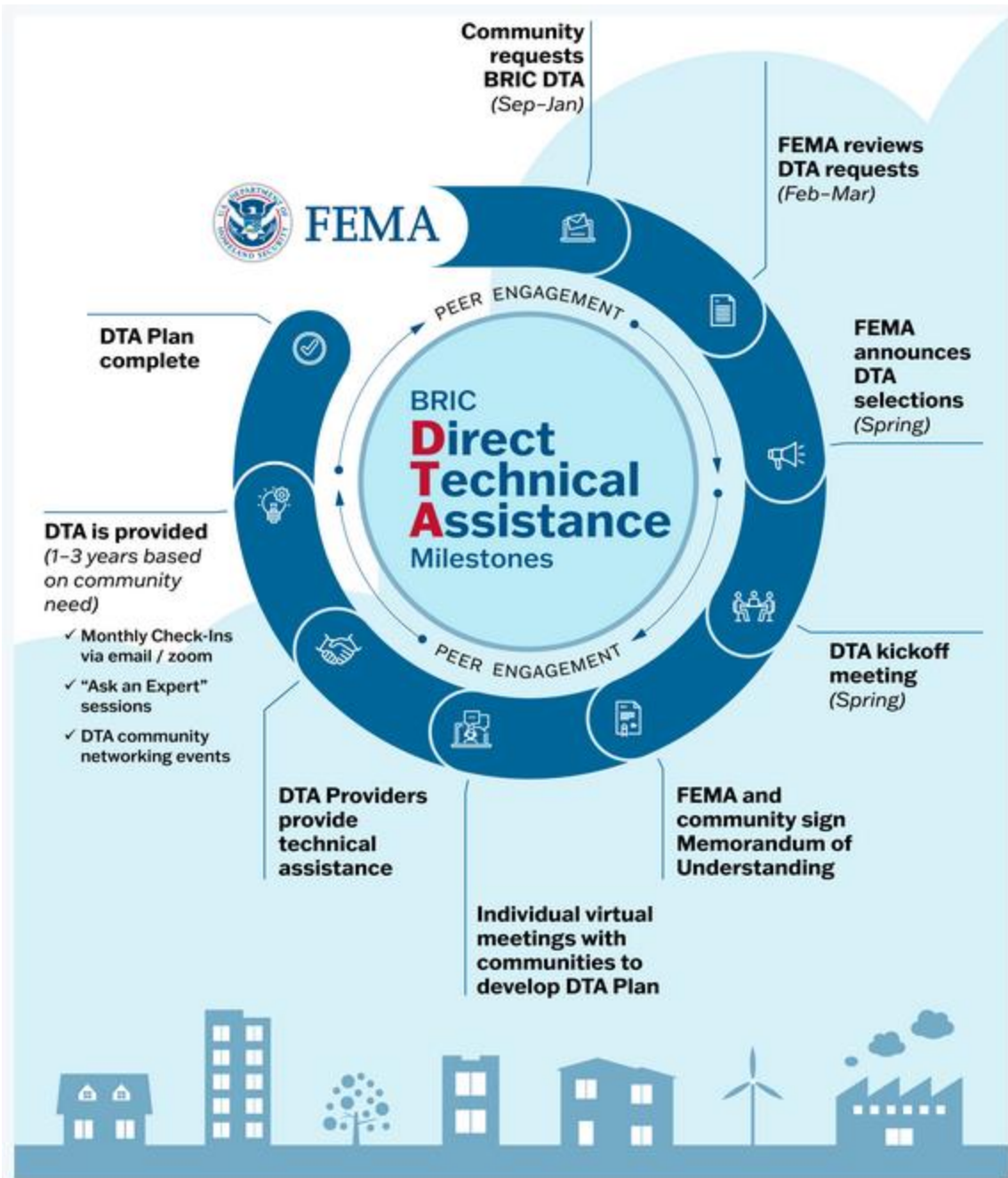
BRIC Direct Technical Assistance

Direct Technical Assistance (DTA) can provide holistic planning support at the earliest stages to communities that may not have the capacity to start on their own.

FEMA will provide support for mitigation planning, project and BRIC application-specific needs throughout the grant lifecycle from pre-application activities to closeout for DTA communities.

Who Is Eligible

- Cities
- Townships
- Counties
- Special District Governments
- Consortiums of two or more communities that fit the above criteria
- Federally Recognized tribal governments



How to Apply

Communities submit a request through this website. FEMA will select requests for non-financial Direct Technical Assistance from those that are submitted no later than 3 p.m. Eastern Time on Jan. 27, 2023. The BRIC DTA form will be available here no later than Sept. 30, 2022, for completion and submission.

There is no requirement for either a previous BRIC grant subapplication or award or an approved hazard mitigation plan to be considered for DTA.

View [sample information](#) that will be required in the Direct Technical Assistance form.

Note: The information in the form is intended for guidance only and is not a request for information. The template is intended to help the reader understand the FEMA Building Resilient Infrastructure and Communities (BRIC) non-financial Direct Technical Assistance (DTA) submission process.

How Assistance is Prioritized

FEMA will review each request and will prioritize assistance for communities that:

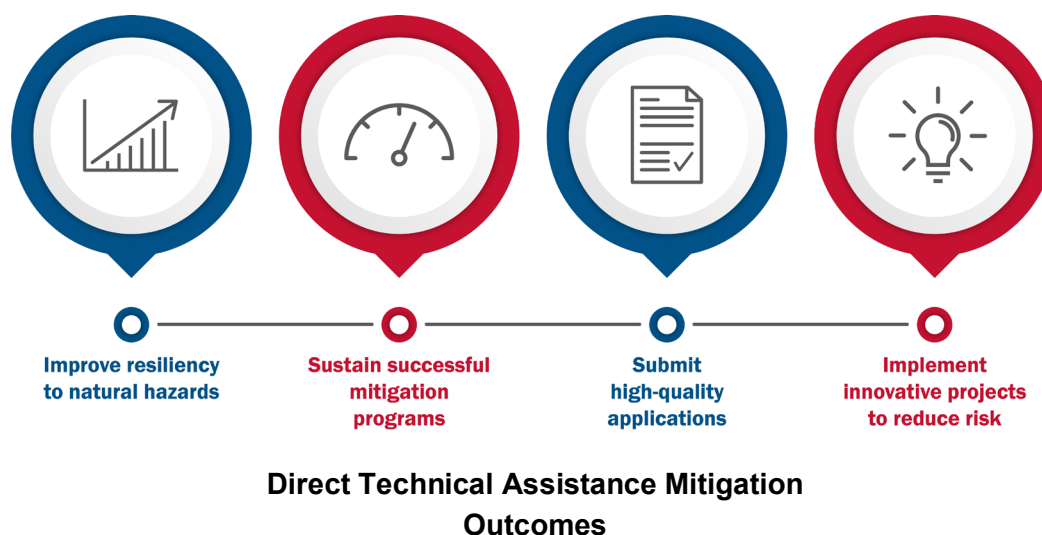
- Have not received a project award, Advance Assistance or Capability- and Capacity-Building subaward under [Pre-Disaster Mitigation](#) (PDM), BRIC, Flood Mitigation Assistance (FMA), or the [Hazard Mitigation Grant Program](#) (HMGP) within the past 5 years
- Meet one of the definitions below:
 - Referenced in Executive Order 14008, Tackling the Climate Crisis at Home and Abroad, including tribal nation governments
 - Have demonstrated the community, or areas within the community, have a [Center for Disease Control's \(CDC\)/ATSDR Social Vulnerability Index \(SVI\)](#) score greater than or equal to 0.6
 - Qualify as an Economically disadvantaged rural community (as referenced in 42 U.S.C. § 5133(a) as a small impoverished community), a community of 3,000 or fewer individuals, where residents have an average per capita annual income that does not exceed 80% of the national per capita income, based on best available data.
- Have demonstrated a compelling need (e.g. communities with significant disadvantaged populations as referenced in EO 14008, communities with multiple major disaster declarations within the past 5 years, communities with limited funding, communities with strong engagement but lacking technical expertise etc.)

Review the [Program Support Material \(PSM\)](#) for more information on DTA.

Last updated August 22, 2022

BRIC Non-Financial Direct Technical Assistance

This Program Support Material (PSM) provides detailed information about the non-financial Direct Technical Assistance offered through the Building Resilient Infrastructure and Communities (BRIC) program. FEMA is expanding its ability to provide non-financial Direct Technical Assistance to selected communities to support mitigation activities.



Background

FEMA received an overwhelming number of requests during the last BRIC application cycle from communities in need of technical assistance. Requests addressed a range of topics, including:

- Local hazard mitigation plan development initial support
- Identifying solutions for specific hazards
- Assistance with hazard mitigation project planning
- Requesting application development support
- Demonstrating cost-effectiveness of a BRIC subapplication submission
- Understanding hazard mitigation grant management

FEMA will continue to deliver Direct Technical Assistance to communities across the nation selected from requests submitted to FEMA. FEMA is expanding its capacity to deliver Direct Technical Assistance to more communities than



FEMA

in previous years. The extent to which FEMA can provide Direct Technical Assistance will depend on the volume of requests and its ability to perform the requested services. Should the demand for the services exceed FEMA's organizational capacity, FEMA may refer communities to other technical assistance offerings.

Support Available

Through Direct Technical Assistance, FEMA will provide support for mitigation planning, **project** development, and BRIC **application-specific** needs throughout the grant lifecycle from pre-application activities to closeout.

FEMA recognizes communities have diverse needs and different capability and capacity levels. FEMA will consider requests for all types of Direct Technical Assistance if they meet the eligibility and submission information requirements outlined on the BRIC Direct Technical Assistance webpage.

Eligibility Information

BRIC Direct Technical Assistance defines communities as cities, townships, counties, special district governments, federally recognized Tribal governments, and consortiums of communities. FEMA considers all eligible for non-financial Direct Technical Assistance.

A BRIC grant subapplication or award under the state/territory allocation, tribal set-aside, or national competition is not a pre-requisite or requirement for consideration for Direct Technical Assistance. Additionally, **an approved hazard mitigation plan is not a pre-requisite or requirement** for consideration for Direct Technical Assistance.

Direct Technical Assistance must **improve the community's capacity and capability to conduct mitigation activities, increase the community's resilience to natural hazards, or identify projects that will holistically improve the community's resilience and reduce risk.**

FEMA will review each submitted request and select communities based upon the compelling need, the specific request, and the extent the request demonstrates that the assistance will further BRIC's goals to build community capability and resilience. FEMA will notify the community of its selection to receive non-financial Direct Technical Assistance.

FEMA will prioritize non-financial Direct Technical Assistance for communities that:

- Have not received a project award, Advance Assistance, or Capability- and Capacity-Building subaward under [Pre-Disaster Mitigation](#), BRIC, Flood Mitigation Assistance, or [Hazard Mitigation Grant Program](#) within the past 5 years
- Meet one of the definitions below:
 - Referenced in Executive Order (EO) 14008, *Tackling the Climate Crisis at Home and Abroad*, including federally recognized Tribal governments

The following information is intended for guidance only and is not a request for information. The following template is only intended to help the reader understand the grant application process.

- Have demonstrated the community, or areas within the community, have a [Centers for Disease Control and Prevention's \(CDC's\) / Agency for Toxic Substances and Disease Registry \(ATSDR\) Social Vulnerability Index \(SVI\)](#) score greater than or equal to 0.6
- Qualify as an economically disadvantaged rural community (as referenced in 42 U.S.C. § 5133(a) as a small impoverished community): a community of 3,000 or fewer individuals, where residents have an average per capita annual income that does not exceed 80% of the national per capita income, based on best available data
- Have demonstrated a compelling need (e.g., communities with significant disadvantaged populations as referenced in EO 14008, communities with multiple major disaster declarations within the past 5 years, communities with limited funding, communities with strong engagement but lacking technical expertise)

Submission Information

FEMA intends to significantly grow the non-financial Direct Technical Assistance initiative in future years for communities and federally recognized Tribal governments across the nation. Communities interested in requesting assistance should visit [BRIC Direct Technical Assistance | FEMA.gov](#) to find information and detailed instructions on submitting requests. For this submission period, requests will be submitted through the new form on the BRIC Direct Technical Assistance webpage; all relevant links, including the actual "submission" link and detailed instructions as to what information to include in the request, is clearly outlined on this webpage. FEMA strongly encourages communities to keep visiting the website as information regarding the submission process gets updated frequently.

FEMA will select requests for non-financial Direct Technical Assistance as detailed on the BRIC Direct Technical Assistance webpage from those that are submitted no later than **3 p.m. ET on January 27, 2023**.

Communities that do not have access to a computer or the internet, or that need assistance submitting a request should contact their [State Hazard Mitigation Officer](#) or [Regional Tribal Liaison](#) for assistance.

Delivery

FEMA will notify the selected communities and their respective applicant (states, territories, or federally recognized tribal governments) of their selection to receive non-financial Direct Technical Assistance. Once communities are selected for this non-financial Direct Technical Assistance, FEMA will coordinate with them on next steps to accomplish their goals and objectives along with developing a timeline.

Please send all questions to fema-bricdirecttechnicalassistance@fema.dhs.gov.

The following information is intended for guidance only and is not a request for information. The following template is only intended to help the reader understand the grant application process.