

U.S. Department of Agriculture
 Forest Service
 Eastern Region State, Private and Tribal Forestry

Forest Health Protection Staff Directory September 2024



Regional Office - Milwaukee

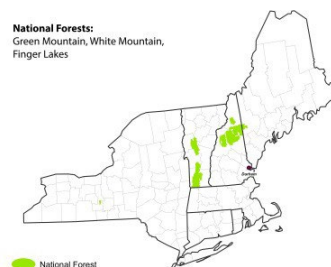
MAIL 626 East Wisconsin Avenue
 Milwaukee, WI 53202

EMPLOYEE NAME	POSITION TITLE	PHONE	EMAIL
<i>Susan Ellsworth</i>	Director, Forest Health, Forest Markets, and Cooperative Forestry	775-750-9809 (c)	susan.ellsworth@usda.gov
<i>Rachel R. Reyna</i>	Assistant Director, Forest Health, Forest Markets, and Cooperative Forestry	717-448-0979 (c)	rachel.reyna@usda.gov
<i>David L. Mausel</i>	Regional Entomologist	414-267-7136 (c)	david.mausel@usda.gov
<i>John F. Kyhl</i>	Pesticide Coordinator/Invasive Plants	651-366-7706 (c)	john.f.kyhl@usda.gov
<i>Angel Saavedra</i>	Regional Pathologist	208-320-6890 (c)	angel.saavedra@usda.gov
<i>Stephen Burr</i>	Forest Health Monitoring Coordinator	414-297-1535; 414-374-2426 (c)	stephen.burr@usda.gov
<i>Vacant (FHP)</i>	Biological Scientist		
<i>Angie Ruble</i>	Acting Regional Aviation Officer (FAM)	573-341-7424	angie.ruble@usda.gov
<i>Ryne Hicks</i>	Regional UAS Program Manager (FAM)	414-297-3600; 414-208-7108 (c)	ryne.hicks@usda.gov

Durham Field Office

MAIL USDA Forest Service
 Louis Wyman Forestry Bldg. Sciences Lab271
 Mast Road
 Durham, NH 03824

PHONE 603-868-7693/7600
FAX 603-868-7604



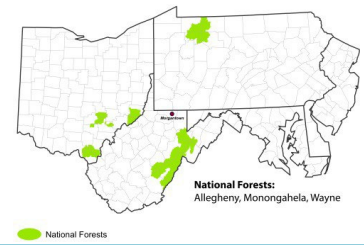
EMPLOYEE NAME	POSITION TITLE	PHONE	EMAIL
<i>Michael J. Bohne</i>	Forest Health Group Leader	603-868-7708; 802-238-7516 (c)	michael.bohne@usda.gov
<i>Robert C. Cooke</i>	Forester	603-868-7705	robert.r.cooke@usda.gov
<i>Marc DiGirolomo</i>	Biological Scientist	603-868-7738	marc.f.digirolomo@usda.gov
<i>Kevin J. Dodds</i>	Entomologist	603-868-7743	kevin.j.dodds@usda.gov
<i>Justin Williams</i>	Remote Sensing Program Manager	603-815-8327	justin.williams3@usda.gov
<i>Cameron McIntire</i>	Plant Pathologist	603-534-3081	cameron.mcintire@usda.gov
<i>Isabel Munck</i>	Plant Pathologist	603-868-7636	isabel.munck@usda.gov
<i>Traci Foulkes</i>	Natural Resource Specialist	603-815-8327 (c)	traci.foulkes@usda.gov
<i>Nathan W. Siegert</i>	Entomologist	603-868-7717	nathan.w.siegert@usda.gov
<i>Jon Janelle</i>	Forester	603-868-7628	jonathan.janelle@usda.gov
<i>James Airey</i>	Forester	603-312-3598	james.airey@usda.gov
<i>Vacant</i>	Botanist		

Morgantown Field Office

MAIL USDA Forest Service
180 Canfield Street
Morgantown, WV 26505

PHONE 304-285-1500

FAX 304-285-1505



EMPLOYEE NAME	POSITION TITLE	PHONE	EMAIL
<i>Richard M. Turcotte</i>	Forest Health Group Leader	304-285-1544	richard.m.turcotte@usda.gov
<i>Heather Smith</i>	Plant Biologist	304-285-1567	heather.c.smith@usda.gov
<i>Ivich Fraser¹</i>	Entomologist	734-626-0632	ivich.fraser2@usda.gov
<i>Craig Larcenaire</i>	Entomologist	304-285-1565	craig.j.larcenaire@usda.gov
<i>Kristen Wickert</i>	Plant Pathologist	304-285-1594	kristen.wickert@usda.gov
<i>Danielle K. Martin</i>	Plant Pathologist	304-285-1531	danielle.k.martin@usda.gov
<i>William K. Oldland</i>	Entomologist	304-285-1585	william.k.oldland@usda.gov
<i>Tim Tomon</i>	Entomologist	304-285-1556	timothy.tomon@usda.gov
<i>Chris J. Hayes</i>	Entomologist	304-285-1553	christopher.j.hayes@usda.gov
<i>Danielle Kelley²</i>	Biological Science Technician	814-331-3257	danielle.kelley@usda.gov

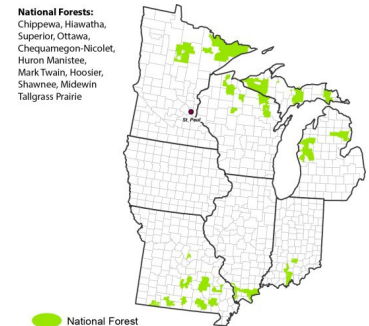
¹ Located in Ann Arbor, MI; ² Located in Bradford, PA.

St. Paul Field Office

MAIL USDA Forest Service
1992 Folwell AvenueSt.
Paul, MN 55108

PHONE 651-649-5180

FAX 651-649-5244



EMPLOYEE NAME	POSITION TITLE	PHONE	EMAIL
<i>James Jacobs</i>	Forest Health Group Leader	651-649-5180	James.J.Jacobs@usda.gov
<i>Vacant</i>	Entomologist		
<i>Marissa Streifel</i>	Entomologist	651-649-5221	Marissa.Streifel@usda.gov
<i>Patrick Engelken</i>	Entomologist	651-649-5247	Patrick.Engelken@usda.gov
<i>Andrea Hefty Scholer</i>	Entomologist	651-649-5247	Andrea.Scholer@usda.gov
<i>Vacant</i>	Plant Pathologist		
<i>Vacant</i>	Plant Pathologist		
<i>Kara Costanza</i>	Plant Pathologist	651-649-5030	Kara.Costanza@usda.gov
<i>Marc A. Roberts</i>	Forester	651-649-5268	Marc.Roberts@usda.gov
<i>Vacant</i>	Natural Resource Specialist		
<i>Jennifer Larson</i>	Invasive Plant Specialist	651-649-5020	Jennifer.Larson2@usda.gov
<i>Sarah Wegmueller</i>	Remote Sensing Specialist	651-649-5029	Sarah.wegmueller@usda.gov